

# 2026 Kato-she Calendar of garbage disposing No.3

2026 / 4 / 1 (Wed.) - 2027 / 3 / 31 (Wed.)

Area: 下滝野、北野、穂積、河高、高岡、桜台

しもたきの きたの ほづみ こうたか たかおか さくらだい

By 8:30 a.m. on collection days. ■ Regarding the time to put out garbage for collection, please follow the rules for each district.

- Garbage that has no choice but to be burned
- Plastic container packaging
- Other plastics
- Plastic products without [Pura mark]
- Plastic bottles
- Cans and Small metal products
- Batteries
- Fluorescent lamps and Light bulbs
- Non-combustible trash
- Colorless bottles
- Brown color bottles
- Bottles with other colors

April in 2026

| 日  | 月  | 火  | 水  | 木  | 金  | 土  |
|----|----|----|----|----|----|----|
|    |    |    | 1  | 2  | 3  | 4  |
| 5  | 6  | 7  | 8  | 9  | 10 | 11 |
| 12 | 13 | 14 | 15 | 16 | 17 | 18 |
| 19 | 20 | 21 | 22 | 23 | 24 | 25 |
| 26 | 27 | 28 | 29 | 30 |    |    |

May

| 日  | 月  | 火  | 水  | 木  | 金  | 土  |
|----|----|----|----|----|----|----|
|    |    |    |    |    | 1  | 2  |
| 3  | 4  | 5  | 6  | 7  | 8  | 9  |
| 10 | 11 | 12 | 13 | 14 | 15 | 16 |
| 17 | 18 | 19 | 20 | 21 | 22 | 23 |
| 24 | 25 | 26 | 27 | 28 | 29 | 30 |

June

| 日  | 月  | 火  | 水  | 木  | 金  | 土  |
|----|----|----|----|----|----|----|
|    | 1  | 2  | 3  | 4  | 5  | 6  |
| 7  | 8  | 9  | 10 | 11 | 12 | 13 |
| 14 | 15 | 16 | 17 | 18 | 19 | 20 |
| 21 | 22 | 23 | 24 | 25 | 26 | 27 |
| 28 | 29 | 30 |    |    |    |    |

July

| 日  | 月  | 火  | 水  | 木  | 金  | 土  |
|----|----|----|----|----|----|----|
|    |    |    | 1  | 2  | 3  | 4  |
| 5  | 6  | 7  | 8  | 9  | 10 | 11 |
| 12 | 13 | 14 | 15 | 16 | 17 | 18 |
| 19 | 20 | 21 | 22 | 23 | 24 | 25 |
| 26 | 27 | 28 | 29 | 30 | 31 |    |

August

| 日  | 月  | 火  | 水  | 木  | 金  | 土  |
|----|----|----|----|----|----|----|
| 2  | 3  | 4  | 5  | 6  | 7  | 8  |
| 9  | 10 | 11 | 12 | 13 | 14 | 15 |
| 16 | 17 | 18 | 19 | 20 | 21 | 22 |
| 23 | 24 | 25 | 26 | 27 | 28 | 29 |
| 30 | 31 |    |    |    |    |    |

September

| 日  | 月  | 火  | 水  | 木  | 金  | 土  |
|----|----|----|----|----|----|----|
|    |    | 1  | 2  | 3  | 4  | 5  |
| 6  | 7  | 8  | 9  | 10 | 11 | 12 |
| 13 | 14 | 15 | 16 | 17 | 18 | 19 |
| 20 | 21 | 22 | 23 | 24 | 25 | 26 |
| 27 | 28 | 29 | 30 |    |    |    |

October

| 日  | 月  | 火  | 水  | 木  | 金  | 土  |
|----|----|----|----|----|----|----|
|    |    |    |    | 1  | 2  | 3  |
| 4  | 5  | 6  | 7  | 8  | 9  | 10 |
| 11 | 12 | 13 | 14 | 15 | 16 | 17 |
| 18 | 19 | 20 | 21 | 22 | 23 | 24 |
| 25 | 26 | 27 | 28 | 29 | 30 | 31 |

November

| 日  | 月  | 火  | 水  | 木  | 金  | 土  |
|----|----|----|----|----|----|----|
| 1  | 2  | 3  | 4  | 5  | 6  | 7  |
| 8  | 9  | 10 | 11 | 12 | 13 | 14 |
| 15 | 16 | 17 | 18 | 19 | 20 | 21 |
| 22 | 23 | 24 | 25 | 26 | 27 | 28 |
| 29 | 30 |    |    |    |    |    |

December

| 日  | 月  | 火  | 水  | 木  | 金  | 土  |
|----|----|----|----|----|----|----|
|    |    | 1  | 2  | 3  | 4  | 5  |
| 6  | 7  | 8  | 9  | 10 | 11 | 12 |
| 13 | 14 | 15 | 16 | 17 | 18 | 19 |
| 20 | 21 | 22 | 23 | 24 | 25 | 26 |
| 27 | 28 | 29 | 30 | 31 |    |    |

January in 2027

| 日  | 月  | 火  | 水  | 木  | 金  | 土  |
|----|----|----|----|----|----|----|
|    |    |    |    |    | 1  | 2  |
| 3  | 4  | 5  | 6  | 7  | 8  | 9  |
| 10 | 11 | 12 | 13 | 14 | 15 | 16 |
| 17 | 18 | 19 | 20 | 21 | 22 | 23 |
| 24 | 25 | 26 | 27 | 28 | 29 | 30 |

February

| 日  | 月  | 火  | 水  | 木  | 金  | 土  |
|----|----|----|----|----|----|----|
|    | 1  | 2  | 3  | 4  | 5  | 6  |
| 7  | 8  | 9  | 10 | 11 | 12 | 13 |
| 14 | 15 | 16 | 17 | 18 | 19 | 20 |
| 21 | 22 | 23 | 24 | 25 | 26 | 27 |
| 28 |    |    |    |    |    |    |

March

| 日  | 月  | 火  | 水  | 木  | 金  | 土  |
|----|----|----|----|----|----|----|
|    | 1  | 2  | 3  | 4  | 5  | 6  |
| 7  | 8  | 9  | 10 | 11 | 12 | 13 |
| 14 | 15 | 16 | 17 | 18 | 19 | 20 |
| 21 | 22 | 23 | 24 | 25 | 26 | 27 |
| 28 | 29 | 30 | 31 |    |    |    |

**Garbage including unsuitable items will not be collected, and will be marked with a "Non-acceptable" sticker. Please separate it again and discard with the same bag.**

Recyclable trash

Plastic containers and packages



※ Please use this designated trash bag.



Plastic products bearing mark only.

【Plastic bags and wraps】



【Trays】



【Bags for snacks】



●Notes

- ① Empty and rinse inside before discarding.
- ② If the stain is unremovable, discard them as **Combustible trash**.
- ③ Never discard mobile batteries or other ignitable materials.
- ④ Even if there is no 'plastic mark', product plastic packaging is included.

【Plastic Bottles and packages】



【Containers and cups】 (eggs, noodles, puddings, jelly, etc.)



【Cushioning materials】 (Styrofoam, Bubble wrap, etc.)



Other Plastic

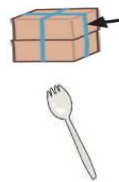
【Buckets】



【Hangers】



【Polypropylene band】



【CD/DVD cases】 (※CDs and DVDS are burnable)



(Plastic products without 'Plastic mark')

●Notes

- ① **Pure plastics that do not fall under the category of plastic containers and packaging plastics, such as plastic products, are eligible for this program.**
- ② Composites with metals and other materials are not included.
- ③ Please remove dirt before disposing of them.
- ④ Kitchen cutting boards, bathtub covers, etc. and polyvinyl chloride (PVC) products should be put out as combustible trash.

Bottles



【Colorless bottles】



【Brown color bottles】



【Bottles with other colors】

●Notes

- ① Bottles for foods, beverages or medicines only.
- ② Remove caps and labels then rinse inside.
- ③ Bottles should be sorted by **the color of the drinking spout** : colorless, brown or other colors.
- ④ Cosmetic bottles and glass cups are **non-burnable trash**.

Cans, Spray cans and small metals



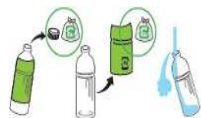
●Notes

- ① Please rinse out the inside of empty cans or otherwise remove dirt before putting them out.
- ② **Spray cans should be removed only after the contents have been completely used up.**
- ※If you are unsure, please contact the "Japan Aerosol Association".
- ③ Please remove non-metallic objects (e.g., vinyl parts of umbrellas).
- ※Items that cannot be removed, such as the handles of pots and knives, should be removed without removing them.

Plastic bottles



Look for this mark.



※Caps and labels should be put out of Containers and Packaging plastics.

※Notes

- ① Remove caps and labels then rinse inside.
- ② Do not crush or break bottles.
- ③ Caps and labels are disposed as Plastic containers and packages.

Batteries



※Notes  
**Rechargeable batteries and button batteries cannot be disposed of at garbage collection stations as they may catch fire. Please see reverse side for processing instructions.**

Fluorescent lamps and Light bulbs



※Notes  
**Do not break the items .**

Garbage that has no choice but to be burned



【Compost】

※ Please drain out the liquid.



※ Please use this designated trash bag.

【Wood chips】

※ Less than 30 cm long, and less than 10 cm wide.  
(Wood chips, Wooden board, Garden plants, Fallen leaves, Tree branches, etc.)



【Leather products】

※ Less than 30 cm long.  
(Leather shoes, Leather bags, etc.)



【Others】

※ Less than 30 cm long.  
(Diapers, Sanitary products, Disposable hand warmer, Gel packet, Paper clay, Crayon, etc.)



●Notes

Please do not put any items that may cause a fire.

Non-combustible trash

Potteries, Mirrors, Glasses

●Rice bowls, Planters, Glass bottles for cosmetic products, etc.



For inquiries about garbage..

Use the garbage separation guide (AI Chatbot) to learn how to separate garbage correctly.



QR Code for Waste Separation Dictionary

Kato City Hall 生活環境課

TEL.0795-43-0503